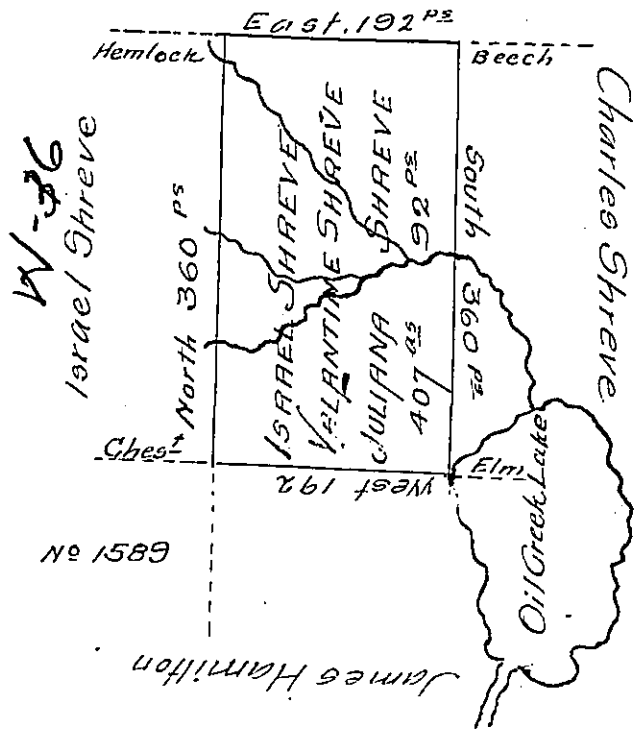


William Shreve



In pursuance of the Settlement of George Buchanan was surveyed on the 22^d day of July 1836 for Israel Shreve - Valentine Shreve and Juliana Shreve the above described tract of land situate in Bloomfield township Crawford County containing 407 acres 92 perches and allowance of six per cent for roads &c.

Eben^r Felton D.S.

John Taylor Esquire

S. Gen^l

IN TESTIMONY that the above is a copy of the original remaining on file in the Department of Internal Affairs of Pennsylvania, made conformably to an Act of Assembly approved the 16th day of February 1833, I have hereunto set my hand and caused the Seal of said Department to be affixed at Harrisburg, this twenty-fourth day of January 1907

Loac P. Brown
Secretary of Internal Affairs.